

# VS Series

## Small capacity steam sterilizers



**Steelco**

**Miele** Group Member

# Global Manufacturer and Supplier for Cleaning and Sterilization Solutions

Born from Steelco and Belimed, SteelcoBelimed pioneers sterile workflow solutions with innovation, reliability, and customer focus. “Innovate with confidence” defines our commitment to high-quality products and services, setting new industry standards in Infection Control and Life Science.

---

## Customer Centricity

Our commitment to fully understand customers' needs and satisfaction is prioritized. Our products and services are designed to meet those specific needs, ensuring every decision we make benefits our customers for the best results.

---

## Innovation

Our dedication to progress drives us to constantly seek out and embrace new ideas, technologies and methods. This commitment ensures our products and services continually evolve and improve.

---

## Sustainability

Our planet, our responsibility. At SteelcoBelimed, sustainability is embedded in everything we do: from optimizing production processes and reducing energy consumption to creating products that support environmental stewardship. For us, protecting the future means acting today. With integrity, purpose, and a deep respect for people and the planet.



---

## Reliability

Our commitment is to achieve the highest levels of productivity through the optimisation of processes, resources, and operations. By consistently delivering dependable solutions, we ensure value creation while minimizing inefficiencies. Our objective is to establish enduring relationships founded on trust, integrity, and mutual respect by reliably fulfilling our commitments.

## VS Series

### Small Capacity Steam Sterilizers

This compact range of steam sterilizers is designed to meet the needs of small health-care facilities and support fast-track sterile processes in large central sterilization departments. The devices combine high performance with low water and energy consumption, offering an efficient and sustainable solution.

With a versatile and safe design, they ensure reliable results and complete process traceability, while helping reduce overall CSSD running costs through cost-effective operation. All models comply with all relevant international directives and standards.



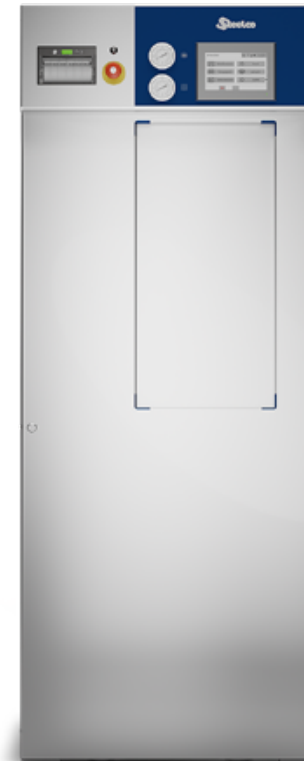
#### VS1TT

Single, manual door horizontal sliding left,  
capacity 1 STU  
chamber size volume 67,5 liters



#### VS1

Single or double automatic sliding down door/s,  
capacity 1 STU  
67,5 liters chamber sizes



#### VS2

Single or double automatic sliding down door/s,  
capacity 2 STU  
143 liters chamber sizes



## Small Footprint & Easy Installation

### A Winning Combination

The VS Series combines a compact footprint with easy installation, requiring no external compressors or complex connections.

With flexible steam feeding options and optimized energy consumption, these units deliver eco-friendly efficiency while meeting international standards. Ideal for facilities seeking reliable performance in limited spaces.

---

#### Easy Plug & Play Installation

Designed for seamless integration into diverse layouts, the VS Series offers versatile steam supply configurations and advanced energy-saving features. Each unit ensures consistent performance, reduced operating costs, and full compliance with international sterilization standards.

This makes them a smart choice for facilities prioritizing sustainability and reliability without compromising throughput.

---

#### Eco Friendly Efficiency

Our sterilizers are engineered to offer best-in-class solutions for the reduction of energy and water consumption giving users the lowest operating costs per load.

---

#### Steam feeding options

Depending on the model, Steelco VS devices are available for direct external clean steam supply (type "V") as well as with multiple choices of built-in or remote steam generators:

- electrically heated (type "E").
- combining the external steam source with a steam generator as back up solution (type "E/V").

---

#### Compliance to standard

Steelco sterilizers conform to:

- 93/42/EEC and its revised versions
- PED 2014/68/EU
- EN 285
- EN ISO 14971
- UNI EN ISO 17665-1
- IEC EN 61010-1
- IEC EN 61010-2-040
- EN 62366-1
- IEC EN 61326-1

# Efficiency & Affordability

## Coming Together

This range of sterilizers features a squared chamber design that optimizes internal space, saving over 50% of unused volume compared to traditional round chamber models. This structural advantage translates into faster cycles and reduced water and energy consumption.



### Design strength

The simple and clean design of this range of sterilizers with few components is aimed for performance and reliability.

### Fast heating

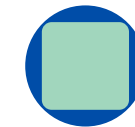
The fast heating, by electrically heated elements covering the complete chamber, ensures reduced cycle times and avoids cold spots leading to potential steam condensation. The high performance water ring vacuum pump guarantees complete air removal and an efficient drying phase.

### Lowest operating costs per load

Chamber construction with significant benefits in cycle speed, water, and energy consumption due to:

- less volume to maintain heated
- less operating time of the vacuum pump
- less steam to be used in relation to the available loading space.
- larger loading space vs chamber volume

round chamber



■ Load volume

■ Chamber volume

square chamber



### Process cycles

#### Reliable Sterilization Cycles and Validation Tests

65 programmes of which 3 factory pre-defined for heating, instruments at 134°C/273.2°F and rubber at 121°C/249.8°F.

Customer programs, such as a Prion cycle, can be programmed and validated according to customer specifications.

### Test/service programs

**Air Leakage Test:** used to verify the vacuum integrity of the chamber.

**Steam Penetration Test (e.g. Bowie & Dick/Helix):** used to check air removal and proper steam penetration.



## Key Advantages a Winning Combination

---

### Easy Plug & Play Installation

The VS range offers true plug-and-play installation: no external compressed air needed, only electrical and water connections. A built-in silent compressor simplifies setup. With a compact design and squared chamber sections, these sterilizers easily pass through narrow spaces like doors and lifts.

Their low height and narrow width make them ideal for space-constrained environments. Equipped with wheels, they are easy to move and position wherever needed.

---

### Optimized Process Speed

Our focus is to provide customers with the fastest possible sterilization processes in compliance with international and local standards and always in relation to the load and Sterile Barrier System.

The liquid ring vacuum pumps allow for faster processes and are perfectly matched to each device chamber size.

---

### Shelves Position Configurable

Even in small sterilizers, we provide the maximum load flexibility by repositioning the load levels of the semi-extractable shelves, reducing floor space needed for loading equipment like trolleys and separate loading racks.





## Flexibility & Control Coming Together

The large 7" touch screen control panel facilitates device control with bright, easy-to-read information even from a distance: an intuitive and practical aid for operators in their daily tasks. In addition, the well-thought-out and user-friendly design and touch screen is consistent throughout the portfolio of Steelco devices, supporting intuitive operation and reliable processes.

### A user-friendly interface

Operators are supported in every step of their interaction with the device through clear and easy-to-understand commands. Cycle programs can also be selected via barcode or RFID scanner.

The large 7" touchscreen control panel displays cycle status and alarm messages, facilitating device control with bright and easy to read information.

### User access levels

User access is split into 5 levels to ensure that only trained staff have access to specific functions: operator, department manager, service technician at the customer's site, authorized service technician, and manufacturer.

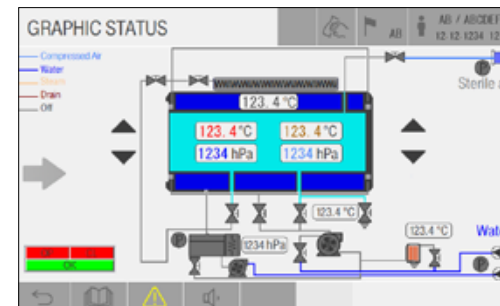
Thanks to the HMI's intuitive design, in line with the whole our portfolio of devices, operations are easy and processes are safe.

### Technical service mode

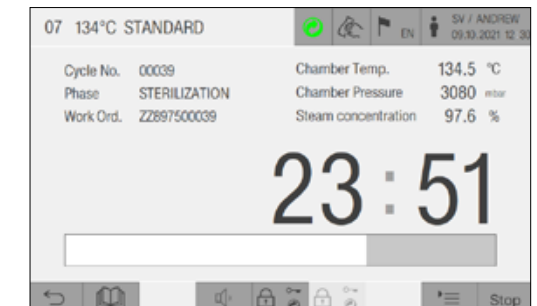
The sterilizer is designed with few components to streamline maintenance. An easy-to-read synoptic panel allows for an in-depth overview of component status of the sterilizer, speeding up service interventions.

### Cycle data storage

Cycle data is stored and available from the optional integrated printer and, if the device is connected to the network, data can be sent to a centralized traceability system.



Easy-to-read synoptic panel



Highly visible cycle status and alarm messages.

# Ergonomics & Flexibility

## Coming Together

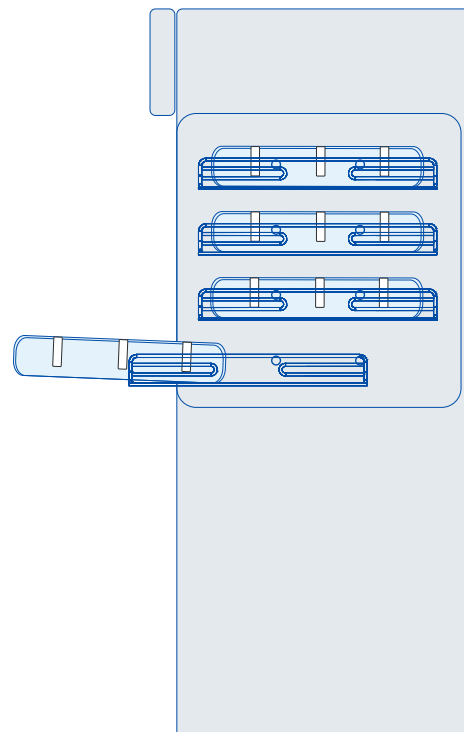
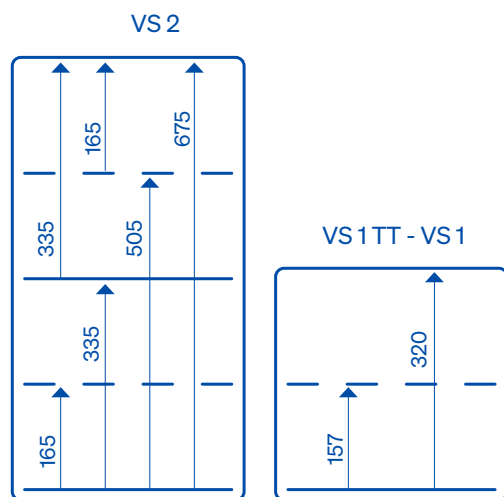
### Shelves position configurable

Make the most of the sterilizer capacity: even with small sterilizers, Steelco enables adding and easy repositioning of the load levels.

Each shelf is semi extractable (on both sides in case of double door pass-through models) to ease loading and unloading whilst reducing the risk of possible contacts with hot surfaces and no additional trolleys or loading racks needed.

### Loading Configurations

Useful loading heights in mm showing the combinations with the addition of intermediate shelves and the use of the semi-extractable loading tray.



## Reliability & Serviceability Coming Together

### Top quality materials, devices made to last!

The sterilization chamber, as well as the steam process piping, are made of high quality AISI 316 L stainless steel. This is a guarantee for long-term reliability and steam cleanliness.

The acid-proof stainless steel chambers and piping are fully insulated with a CFC-free thermal insulation that is covering easy to remove and to refit in case of service needs. With ease of service in mind, most piping is connected using stainless steel tri-clamps.

### Safety first

The automatic doors of VS 1 and VS 2 are equipped with a safety anti-trap device to protect users.

The manual door version of the VS 1 TT model is equipped with a mechanism that keeps the door safely locked during the sterilization process until completion.

To prevent any potential water dripping onto the floor, the units are fitted with a water drip collection tray as standard.

### Minimized service requirements

Maintenance of this range of devices is highly simplified and cost-effective.

Access for service is fully frontal via the hinged door which opens completely (and from the back if double door version). This grants access to all the components and streamline maintenance.



## Capacity and Dimensions Layouts and Configurations

Model	Chamber dimension		
	Height	Depth	Length
VS 1 TT (single door)	330 mm	620 mm	330 mm
VS 1 TT (single door) with stand closed cabinet	330 mm	620 mm	330 mm
Overall dimensions			
VS 1 TT (single door)	700 mm	783 mm	910 mm
VS 1 TT (single door) with stand closed cabinet	1465 mm	783 mm	910 mm

Loading height: 900 mm above finished floor when on stand closed cabinet.

Model	Chamber dimension		
	Height	Depth	Length
VS 1/1 (single door)	330 mm	620 mm	330 mm
VS 2/1 (single door)	330 mm	620 mm	700 mm
VS 1/2 (double door)	330 mm	620 mm	330 mm
VS 2/2 (double door)	330 mm	620 mm	700 mm
Overall dimensions			
VS 1/1 (single door)	1510 mm	814 mm	635 mm
VS 2/1 (single door)	1900 mm	844 mm	760 mm
VS 1/2 (double door)	1510 mm	814 mm	635 mm
VS 2/2 (double door)	1900 mm	844 mm	760 mm

(\*) footprint (for outer dimensions of VS 2 add 30 mm for the panels). Loading height: 900 mm above finished floor.

## Smart Connectivity Integrated with SmartHub

### Your Machines are Talking. Are you Listening?

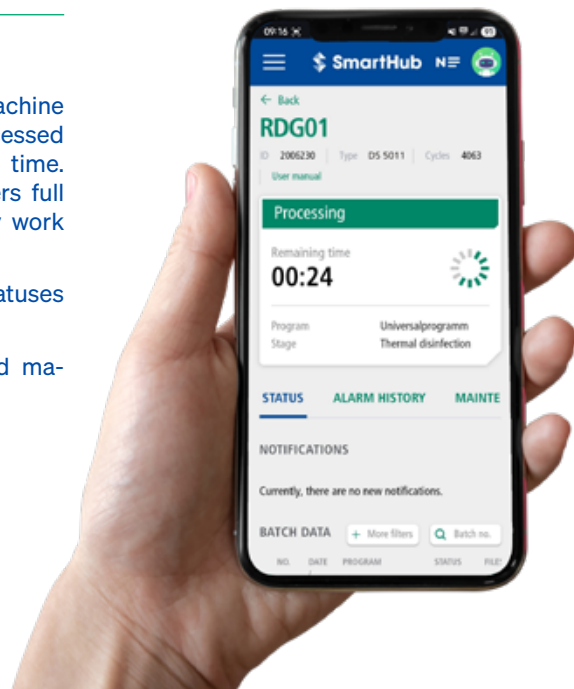
Collecting data from your equipment through data logging pieces of software is relevant to optimize workflow. Then what about instruments?

Tracing instruments throughout their life in hospitals - from use on patients to reprocessing in the CSSD or in external reprocessing centres to the next use on patients - is fundamental to patient safety. Our SmartHub pieces of software allow to easily and automatically collect, store, and analyse data from your machines, whilst also providing you with the tools you need to track and document the history, location, and use of your medical devices throughout their lifecycle.

### SmartHub Orbit at a Glance

With SmartHub Orbit all relevant machine data and cycle statuses can be accessed on any device, from anywhere at any time. This gives sterilization process managers full control and will transform the way they work providing:

- Simple transparency with machine statuses for washer and sterilizer in real-time.
- Up to date batch documentation and machine notifications anytime, anywhere.



### Digitalization is Moving Fast!

We are continuously developing our digital solutions for smart instrument reprocessing in clinics. Ask your sales representative for the list of latest new features available.

## Maximized performance with SteelcoBelimed's experts

With a global network of over 1,000 certified service technicians and trusted partners, SteelcoBelimed delivers fast, reliable, and locally available technical support to ensure uninterrupted performance of your critical equipment.

Our teams are strategically positioned across key regions, offering deep expertise in the operational requirements of hospitals, pharmaceutical manufacturing, and research laboratories. Whether it's routine maintenance, emergency service, or performance optimization, we respond with precision and speed.

### Service Plans

Our customized service plans maximize equipment uptime with preventive maintenance based on usage. Options include scheduled visits, repairs, and parts, with add-ons like chamber cleaning and water quality monitoring to enhance performance and efficiency.

### TCO Contracts

Our Total Cost of Ownership contracts offer fixed-cost, multi-year service plans that provide budget stability, reduce operating costs, and extend equipment life—delivering long-term value and supporting sustainability goals.

### Certified Technical Training

Our certified technical training combines classroom and hands-on learning to equip your team with the skills to operate, maintain, and troubleshoot equipment. Small class sizes ensure personalized instruction, and participants receive a certificate upon completion—boosting capabilities and minimizing downtime.

### Digitalization in Service

Our digital solutions offer real-time monitoring, intuitive dashboards, and automated alerts to help service teams detect issues early and plan maintenance more effectively. By integrating these tools into daily operations, facilities can reduce downtime, improve reliability, and make smarter, data-driven decisions.

**SteelcoBelimed**  Group Member

Innovate with confidence

DC-PD-02-Steelco VS Small Range EN Rev.02

Products offered for sale may differ from those described or illustrated in this brochure due to later production changes or/and optional configurations. The products and technical specifications are subjected to change without prior notice. Please consult your Steelco dealer for the latest information.

Steelco S.p.A.  
Via Balegante, 27 - 31039  
Riese Pio X (TV) - Italy

[steelcobelimed.com](http://steelcobelimed.com)



\*Only for products listed into the  
1652/MDD certificate